

GARDEN PICTURE

Make a picture of a garden, cut out colour, and paste in the garden your own bee and butterfly.

1. On card, paste pictures of flowers that attract bees and butterflies. Use pictures from old gardening magazines.
2. Cut out bees and butterfly shapes (templates included in this activity pack), colour and paste in the garden picture.

WEB SITES

RHS pollinator plants list
Bumblebee Conservation Society

REFERENCE LIST

List of Bees found in area of Summerfields and the garden 2016
by Derek Binns, included in this activity pack

BOOK

Butterflies of Sussex 'A Twenty First Century Atlas'
by Michael Blencome and Neil Hume



PLANTING BULBS FOR BEES & BUTTERFLIES

The bulbs are different sizes so will need to be planted at different depths.

Rule for bulb planting: Plant twice the depth of the bulb and leave plenty of room for roots to grow down when planting in pots. Bigger pots are needed for bigger bulbs. Remember to water pots if kept inside, keep in the light, or put them outside over winter. If planting in the ground mark the bulbs and keep weed free. Examples to plant in the Autumn to flower April/May the following year.

TULIPA LINIFOLIA

Small pot, 2cm deep
Small tulip, red
Height 4/5 cms

ANEMONE BLANDA

Small pot, 2cm deep
Purple blue poppy like
Height 4/5 cms

CHIONODOXA LUCILAE 'ALBA'

Small pot, 2cm deep
Pale blue petals
white & yellow centre
Height 4/5 cms

CROCUS

Medium pot, 3cm deep
Yellow & Purple
Height 5/7 cms

MUSCARI ARMENIACUM

Medium pot, 3/4cm deep
Grape like pale
purple flower
Height 6/7 cms

NECTAROSCORDUM SICULUM

Large pot, 4/5cm deep
Pretty pink bell like
flowers
Height 4/5 cms



NATURE ACTIVITIES

BEEES SEEN NEAR BOHEMIA WALLED GARDEN



Tawny Mining Bee
Andrena fulva - Female



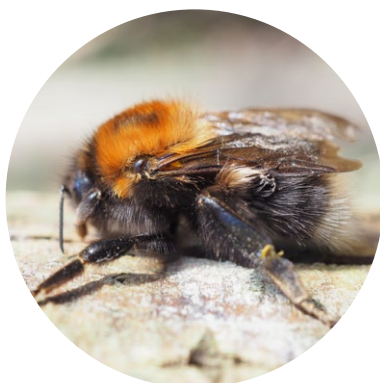
Yellow-Legged Mining Bee
Andrena flavipes



Ashy Mining Bee
Andrena cineraria - Female



Orange-tailed Mining Bee
Andrena haemorrhoa - Female



Tree Bumblebee
Bombus hypnorum



Gooden's Nomad Bee
Nomada goodeniana



Common Carder Bee
Bombus pascuorum



Red Mason Bee
Osmia bicornis



Early Bumblebee
Bombus pratorum

NATURE ACTIVITIES

BEES SEEN NEAR THE WALLED GARDEN 2016



COMMON NAME

LATIN NAME

Tawny Mining Bee	<i>Andrena fulva</i>
Early Mining Bee	<i>Andrena haemorrhoa</i>
Buffish Mining Bee	<i>Andrena nigroaena</i>
Wilke's Mining Bee	<i>Andrena wilkella</i>
Wool-Carder Bee	<i>Anthidium manicatum</i>
Little Flower Bee	<i>Anthophora bimaculata</i>
Hairy-footed Flower Bee	<i>Anthophora plumipes</i>
Honey Bee	<i>Apis mellifera</i>
Tree Bumblebee	<i>Bombus hypnorum</i>
Red-tailed Bumblebee	<i>Bombus lapidaries</i>
White-tailed Bumblebee	<i>Bombus lucorum</i>
Common Carder Bee	<i>Bombus pascuorum</i>
Early Bumblebee	<i>Bombus pratorum</i>
Buff-tailed Bumblebee	<i>Bombus terrestris</i>
Ivy Bee	<i>Colletes hederæ</i>
Common Furrow Bee	<i>Lasioglossum calceatum</i>
Leaf-cutter Bee	<i>Megachile centuncularis</i>
Gooden's Nomad Bee	<i>Nomada goodeniana</i>
Marsham's Nomad Bee	<i>Nomada marshamella</i>
Fork-jawed Nomad Bee	<i>Nomada ruficornis</i>
Red Mason Bee	<i>Osmia bicornis</i>
Blue Mason Bee	<i>Osmia caerulea</i>
Sweat Bee	<i>Shecodea</i> spp.





NATURE ACTIVITIES

BUTTERFLIES SEEN NEAR BOHEMIA WALLED GARDEN

COMMON BLUE



Butterflies are
INSECTS!

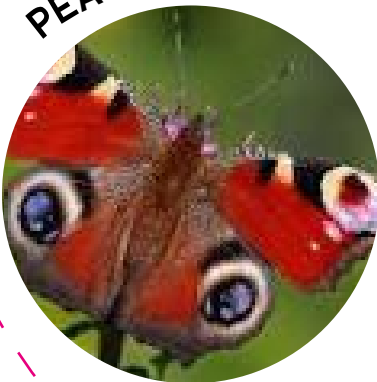
SPECKLED WOOD



COMMA



PEACOCK



Butterflies help pollinate flowers.
Their presence or absence
indicates a lot about the
health of the local environment.

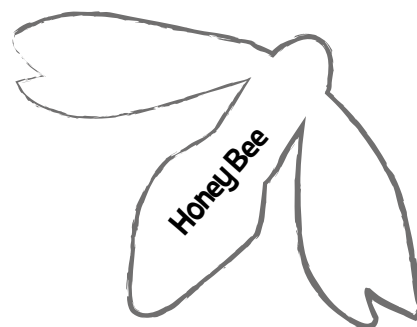
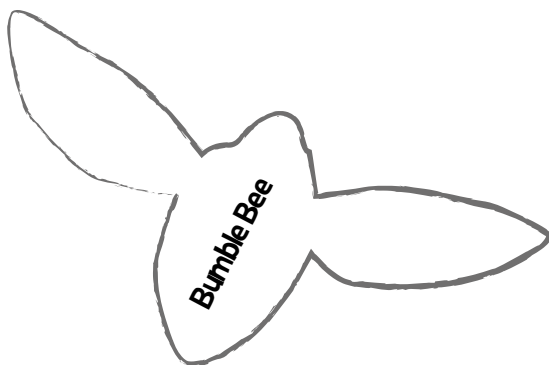
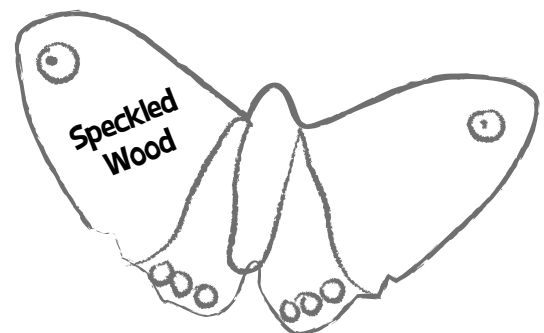
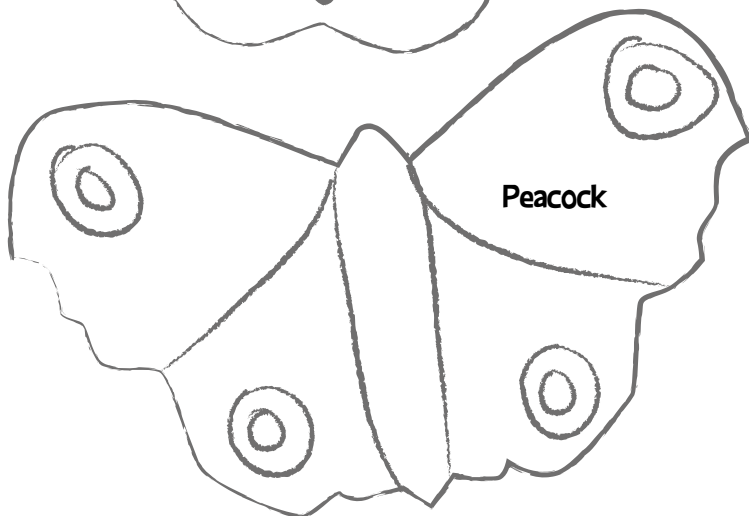
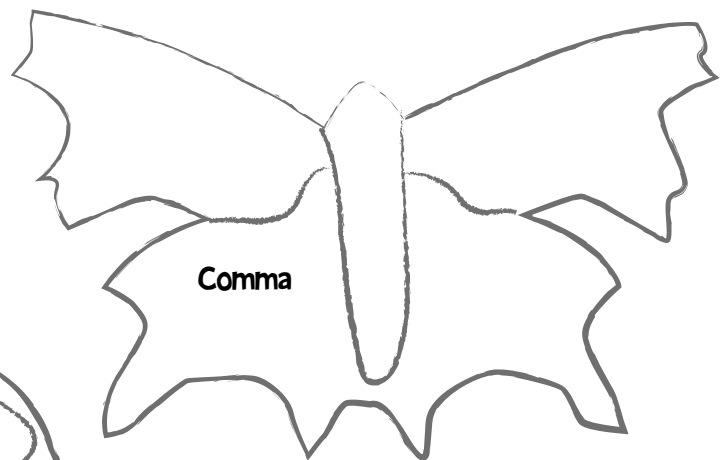
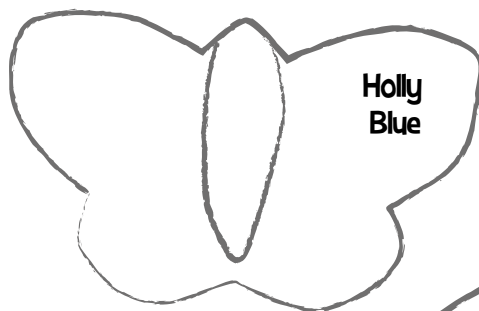
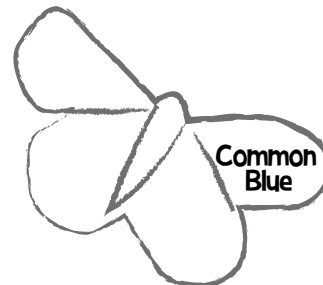
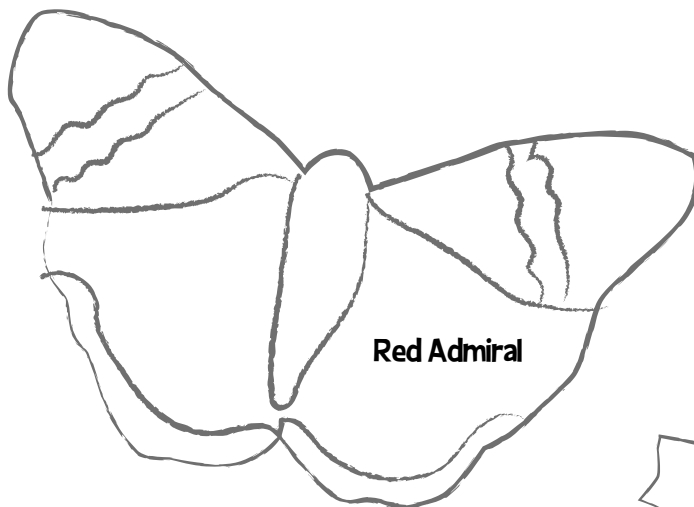
RED ADMIRAL



The life cycle of a butterfly is
made up of four parts, egg, larva
(caterpillars), pupa (chrysalis)
and eventually the adult.

HOLLY BLUE







NATURE ACTIVITIES

RESOURCES

MOTHS

sussexmothgroup.org.uk
Information about local species as well as Sussex Moth Group and local Hastings branch events

rx-wildlife.squarespace.com
Events and wildlife sightings from Dungeness to Hastings

mothscount.org
Lots of information about moths

nationalmothnight.info
An annual national counting scheme

ukmoths.org.uk
Help identify British moths

hantsmoths.org.uk
Great site to help identify moths and a handy 'What's flying now' guide which lists 100 most common moths for any week of the year

ukleps.org
Dedicated to identification of eggs, larva and pupa of many British moths and butterflies

BUTTERFLIES

butterfly-conservation.org

BUGS

buglife.org.uk

BEEES

bumblebeeconservation.org
beewalk.org.uk

BATS

bats.org.uk

LADYBIRDS

ladybird-survey.org

DRAGONFLIES

british-dragonflies.org.uk

AMPHIBIANS AND REPTILES

arc-trust.org

GENERAL SITES

rspb.org.uk

wildlifetrusts.org

gov.uk/government/organisations/natural-england
Government's adviser for the natural environment in England. Information and policies

plantlife.org.uk
British conservation charity working nationally and internationally to save threatened wild flowers, plants and fungi

woodlandtrust.org.uk

rspca.org.uk/adviceandwelfare/litter
Raising awareness of how littering and rubbish affects animals

LOCAL SITES

sussexwildlifetrust.org.uk
[sussexwildlifetrust.org.uk/rye harbour](http://sussexwildlifetrust.org.uk/rye-harbour)
Forest School, Nature Tots, bird watching, beach cleans etc

rspca.org.uk/mallydams

educationfuturetrust.org
Forest and beach school

EDUCATIONAL RESOURCES & ACTIVITIES

muddyfaces.co.uk
Resources for children

field-studies-council.org
Resource of environmental field studies papers available as pdf downloads. Aimed at non-specialists

rbkc.gov.uk/subsites/wildlife.aspx
The Ecology Centre at Holland Park runs a series of events, activities, educational visits and workshops for schools

woodlandtrust.org.uk/naturedetectives/
Discover exciting wildlife activities to help kids explore nature!

outdoorstudiosarts.com
Artist-led workshops for creative experiential learning that explores environments, landscape, and place

GARDENING ADVICE

rhs.org.uk/science/conservation-biodiversity/.../plants-for-pollinators
Pollinator advice and downloadable lists from Royal Horticultural Society

gardenersworld.com
Practical gardening advice on what to do in your garden and greenhouse

SPOTTER GUIDES, IDENTIFICATION SHEETS & APPS

Helping you to spot & identify wildlife and nature

wildlifewatch.org.uk/spotting-sheets

nationaltrust.org.uk/lists/summer-wildlife-spotter-guides

rspb.org.uk/birds-and-wildlife/wildlife-guides/identify-a-bird/

plantlife.org.uk/uk/discover-wild-plants-nature/spotter-sheets

reading.ac.uk/Herbarium/KiteSite/hrb-KSsppidguides.aspx

opalexplornature.org/identification

nhm.ac.uk/take-part/identify-nature/

buglife.org.uk/bugs-and-habitats/bug-identifier

ispotnature.org/